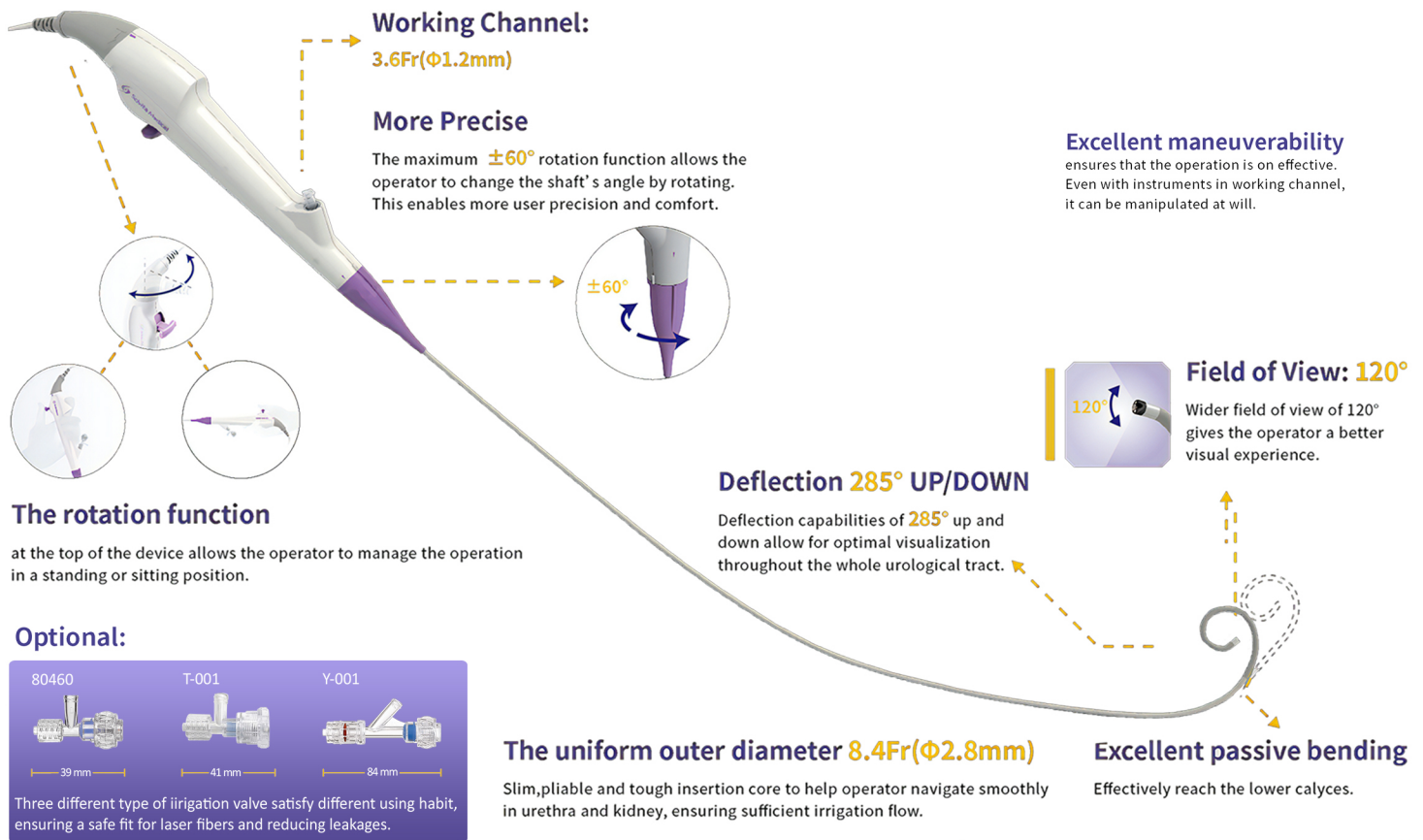


Single-Use Urology Videoscope



Be ready at any time

- Plug and play. Off the Shelf Ready. Consistency every time.
- You decide which hand drives. Avoid cross-infection.
- Save on re-sterilisation and maintenance costs.
- Eradicate unnecessary repair bills.
- Save time post procedure, no need for scope integrity testing.

Coming Soon:

8.4Fr / 7.5Fr Diameter
Outer Diameter

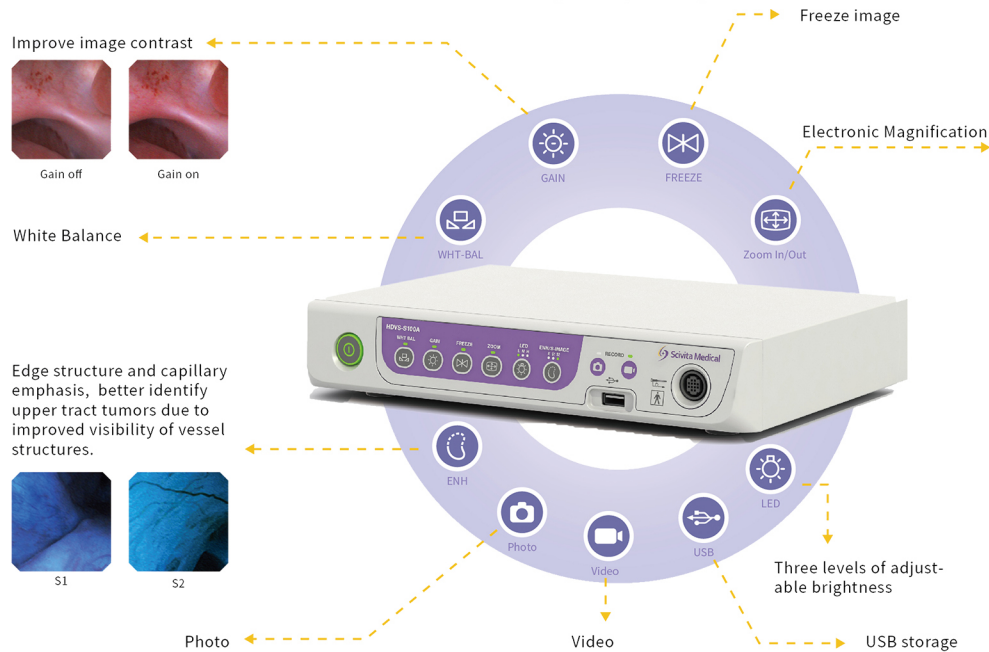
Angulation Lock
Function

Unlimited
Operational Time

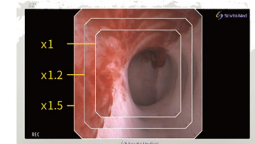


Single-Use Urology Videoscope

(8.4 Fr / 7.5 Fr)

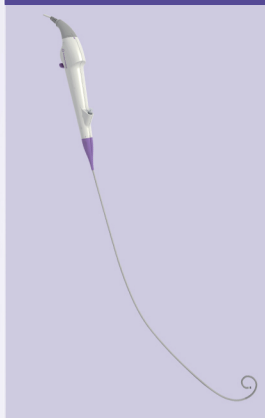


Scivita brings a brand-new and higher-resolution digital image without distortion, even on a 32-inch monitor.



The processor compatible with various monitors. 32-inch monitor is highly recommended.

SPECIFICATION



| Model | SUV-2A-B | SUV-2C-B | SUV-1D-B |
|------------------------------|------------------------|------------------------|------------------------|
| Shaft Diameter OD | 8.4Fr (Φ 2.8mm) | 7.5 Fr (Φ 2.5mm) | 16.2Fr (Φ 5.4mm) |
| Outer Diameter of distal End | 7.8Fr (Φ 2.4mm) | 7.2 Fr (Φ 2.4mm) | 15.6Fr (Φ 5.2mm) |
| Weight | 200g | 200g | 200g |
| Working Length | 680mm | 680mm | 380mm |
| Total Length | 990mm | 990mm | 700mm |
| Working Channel OD | 3.6Fr (Φ 1.2mm) | 3.6 Fr (Φ 1.2mm) | 6.6Fr(Φ 2.2mm) |
| Field of View | 120° | 120° | 120° |
| Depth of Field | 0.5~120mm | 0.5~120mm | 0.5_120mm |
| Angulation Range | 285° Up/Down | 285° Up/Down | 220° Up/ Down |

SPECIFICATION

PROCESSOR



| | |
|--------------------------|----------------------|
| Model | HDVS-S100A |
| Size | 300mm X 225mm X 57mm |
| Weight | 2.5 Kg |
| Power Supply Requirement | 100-240V |
| Output | DV*1, SDI*2 |
| Interface | Foot Switch and USB |

ACCESSORIES(OPTIONAL):

| | | |
|------------------|-----------------|------|
| Irrigation Valve | 80460 | 39mm |
| | T-001 | 41mm |
| | Y-001 | 84mm |
| Foot Pedal | KF2 1S-MED GP25 | |